

M-3 Scout

armoured personnel carrier

Scale 1:35

Made in Russia

№3519



During WW II many armies of the world needed cars that carrying the infantry could protect the occupants against small arms fire and fragments. The new class of machines - armored personnel carriers came into being. A lot of half-track carrier designs were developed in the USA which entered the War in December 1941. However the demand for a lighter vehicle with both armored car speed and personal carrier internal capacity also arise for reconnaissance and fire support duties.

Back in 1939 US Army adopted M3 armored car developed by White company. The vehicle featured four wheel drive and adequate armor, could carry six infantrymen, and was equipped with 2-3 machine-guns and radio. The M3 known in the US Army as Scout Car included many its half-track namesake components - cabin, engine compartment, bonnet and front axle. The M3 serial production continued until 1944 with 20918 units built including improved M3A1 version. The latter featured more compact body (some 250 kg lighter than an initial model), more powerful engine and is presented in this kit.

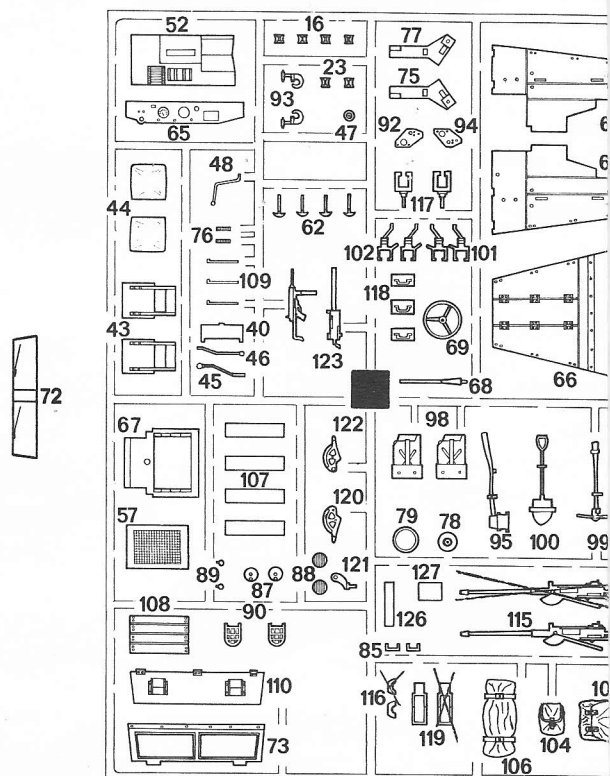
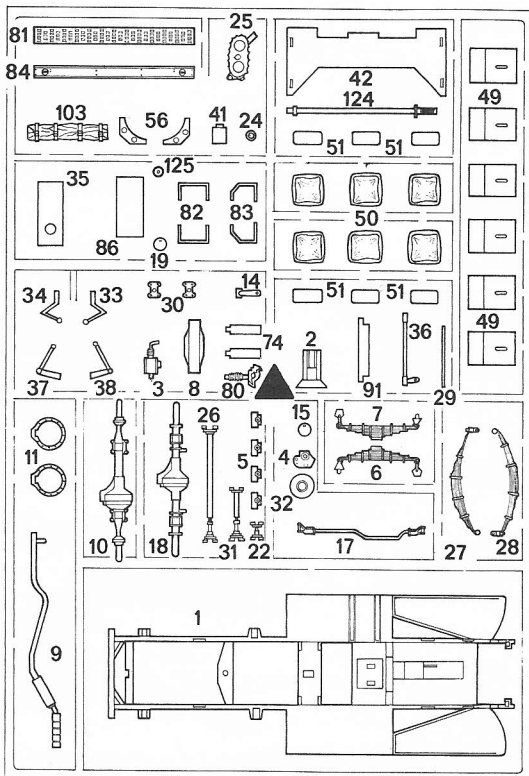
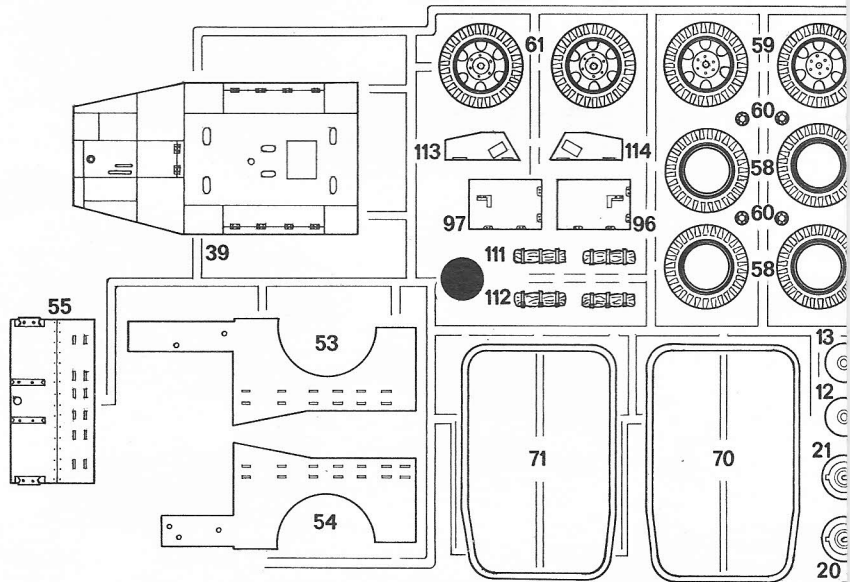
Many Scouts were supplied to allied armies - to Britain, Canada, New Zealand, French, and China. 3340 units were delivered to Soviet Union and were used in both Red Army and Polish Army (more than one hundred). In the USA and British Union M3 were used in cavalry and motorized infantry units as well as in artillery battalions. Typically there were 17 Scout Cars in reconnaissance squadron. In the Red Army M3 were used in tank reconnaissance companies and in motorized infantry brigades - 10 per company. Cavalry régiments included one Scout-equipped squadron with 15 machines and some guard mechanized and artillery units were fully equipped with M3s. The 4th Guard mechanized Army Corps that liberated Romania, Hungary, and Austria had most of M3A1 cars in 1944-45. Combat vehicles of the Corps were distinguished by an animal character stenciling - 13th Army vehicles carried white deer, 14th Army - fox, and 15th - rhinoceros.

M3 scout cars were widely used in post-war military conflicts in Indo China and Near East for scout and reconnaissance transport and fire support missions. In the Soviet Union using M3 basic concept the БТР-40 armored car was developed and served with Soviet Army for decades.

During WW II most M3s had typical US dark green or olive drab painting scheme. In allied armies they rarely were repainted, but camouflage usually was applied depending on the season and natural conditions. American machines carried Army registration code on the bumper and white star national insignia. In Britain tactical designation was applied on the car sides. In the USSR tactical marks could be applied on the body sides and/or cabin doors. US army registration was usually retained and white star painted over with red or camouflage color.

Assembly directions:

1. Use a sharp knife or a pair of scissors to remove parts from the sprue. For easy assembly each part is numbered. The symbol (triangle, rectangle or round) in the part designation indicates the sprue where this part is to be found. Paint parts before removing from the sprue. Use plastic cement ONLY.
2. Care should be taken when using tools and modelling knives, as these can cause personal injury.
3. Plastic parts broken from sprues can have sharp, pointed or jagged edges. Remove these with a file or an sandpaper.
4. Keep out of the reach of children under 36 months old, as some parts are detachable. Children must not be allowed any metal part or wire included with this kit.
5. This document should be retained for reference at a later date, if the need arises, as it includes the "EEC" company name and address as a means of identification of the importer and supplier.



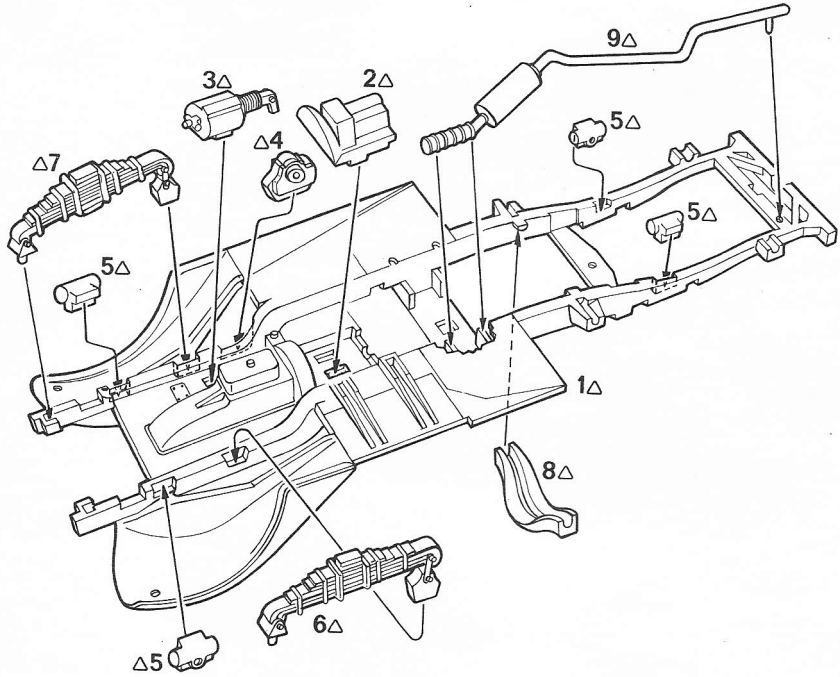
MANUFACTURER:

ZVEZDA,
PROMYSHLENNAYA, 2 - LOBNYA, 141730, RUSSIA

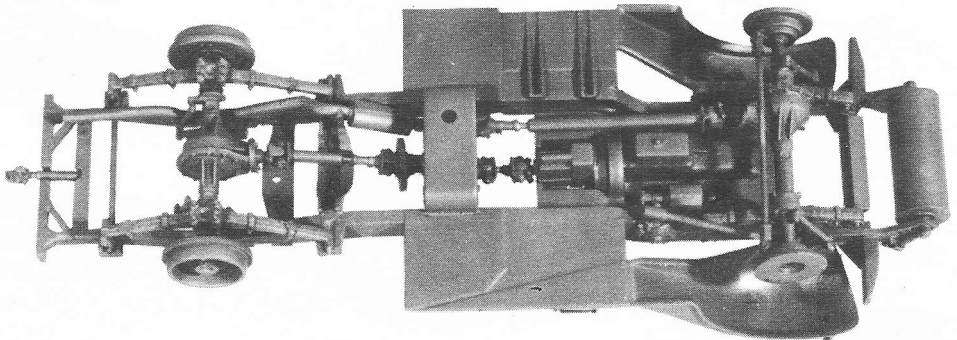
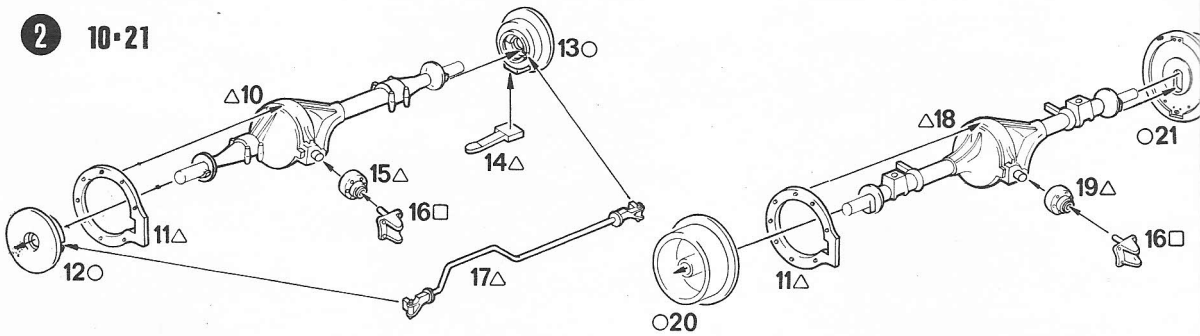
SELLER:

ITALERY SPA
VIA PRADAZZO, 6 - CALDERARA (BO), ITALY

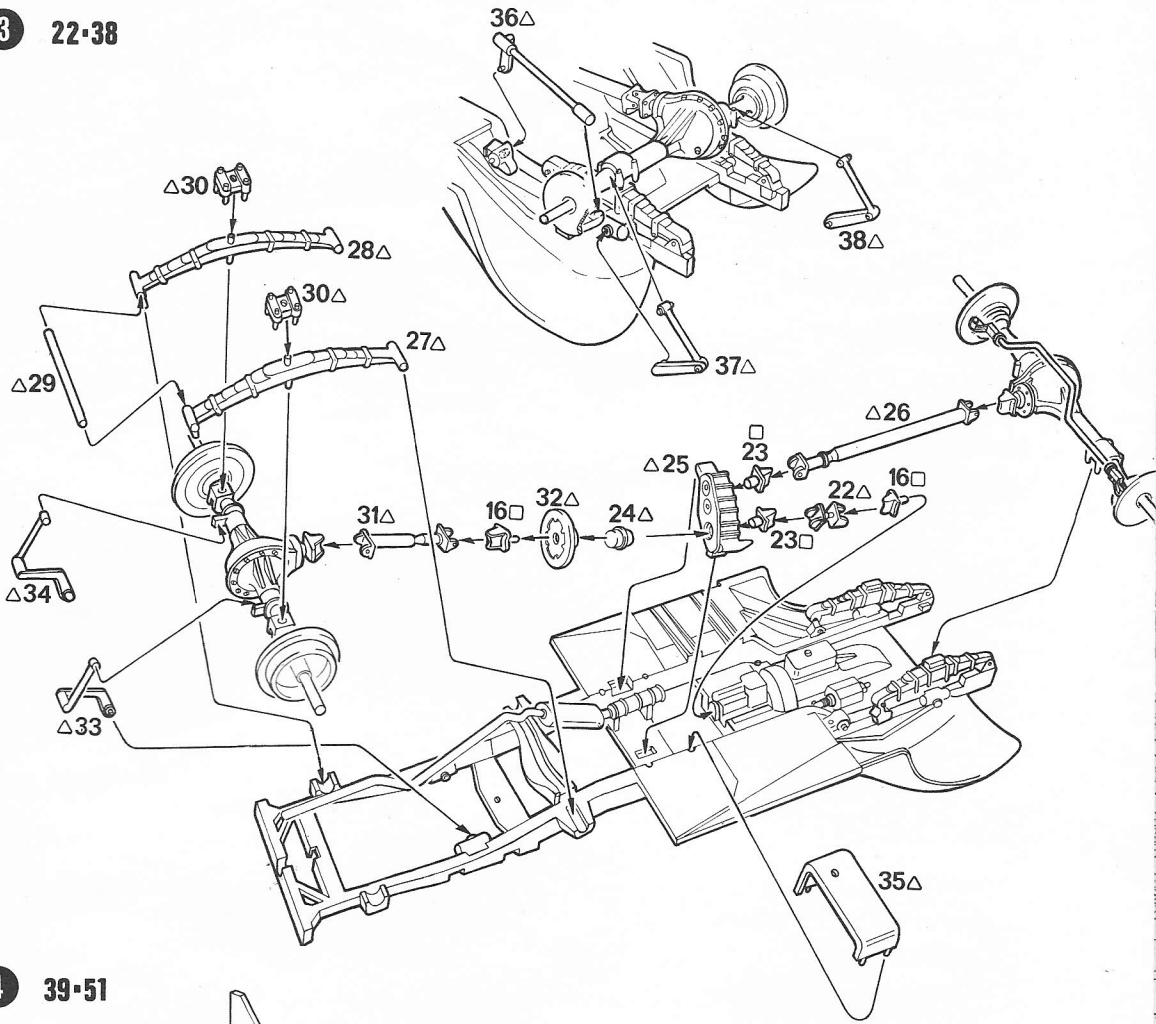
1 1-9



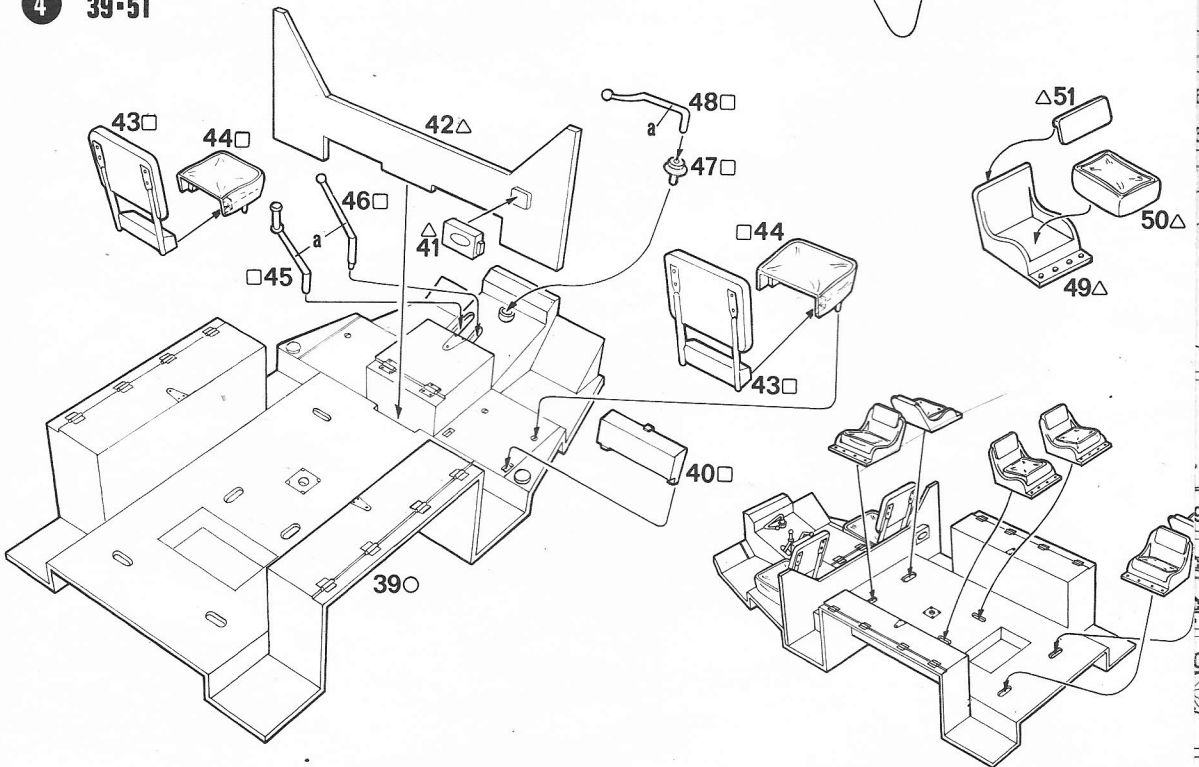
2 10-21



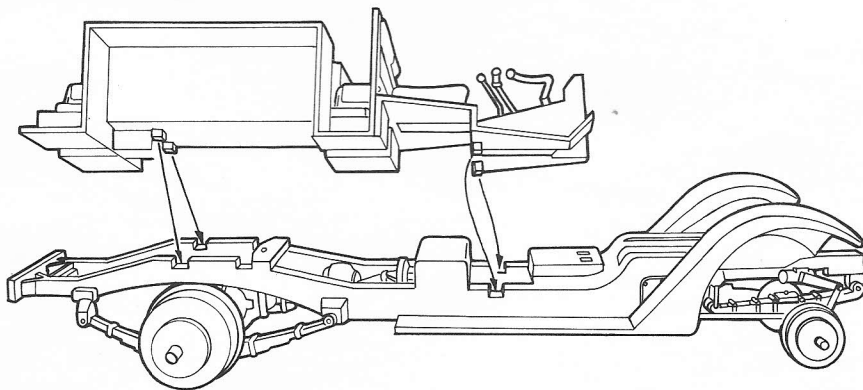
3 22-38



4 39-51

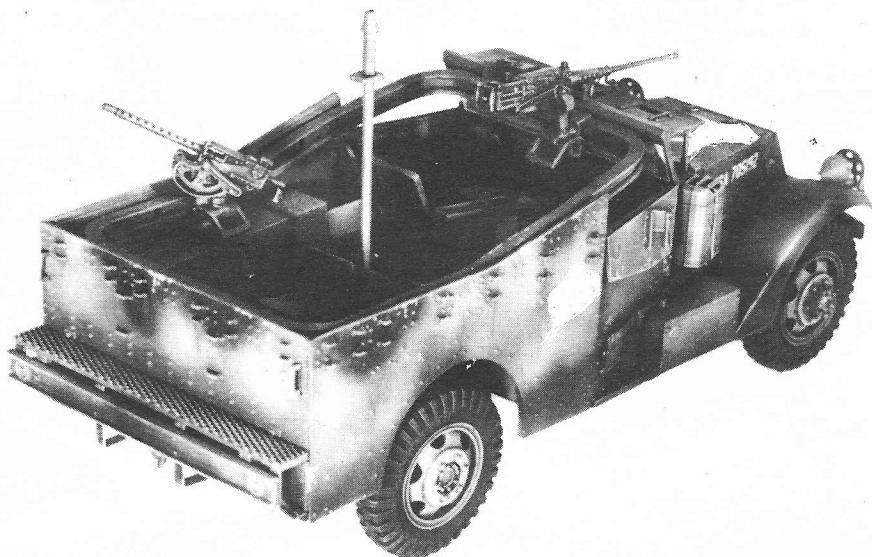
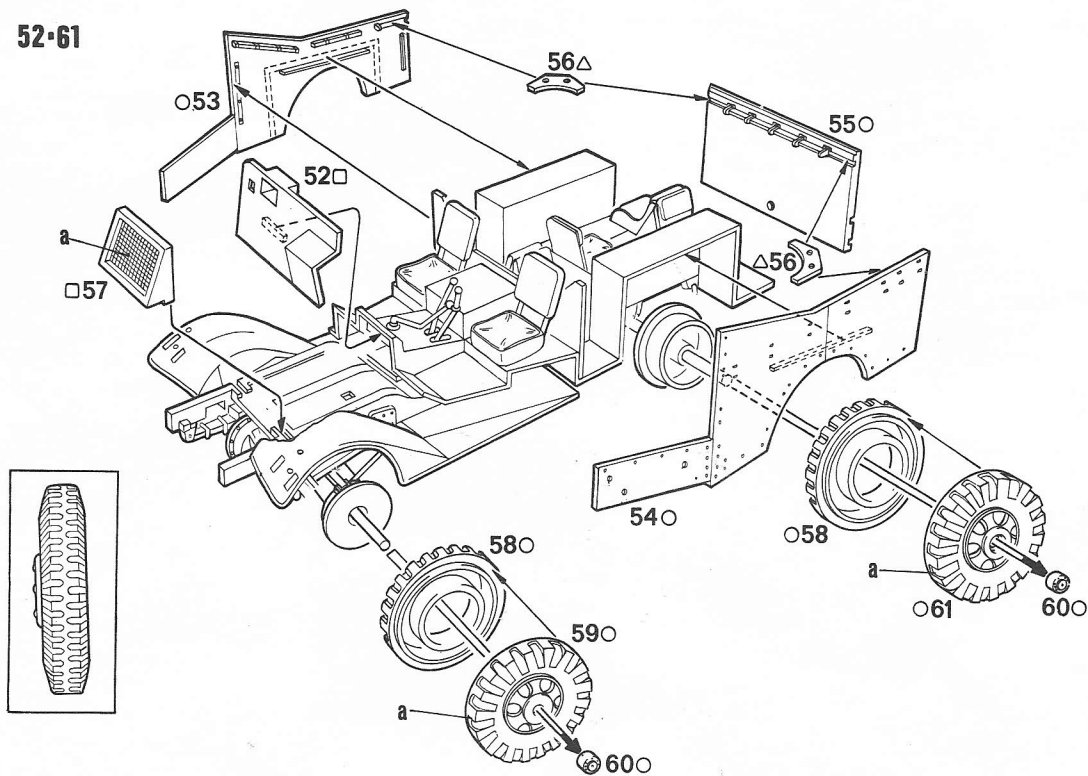


5

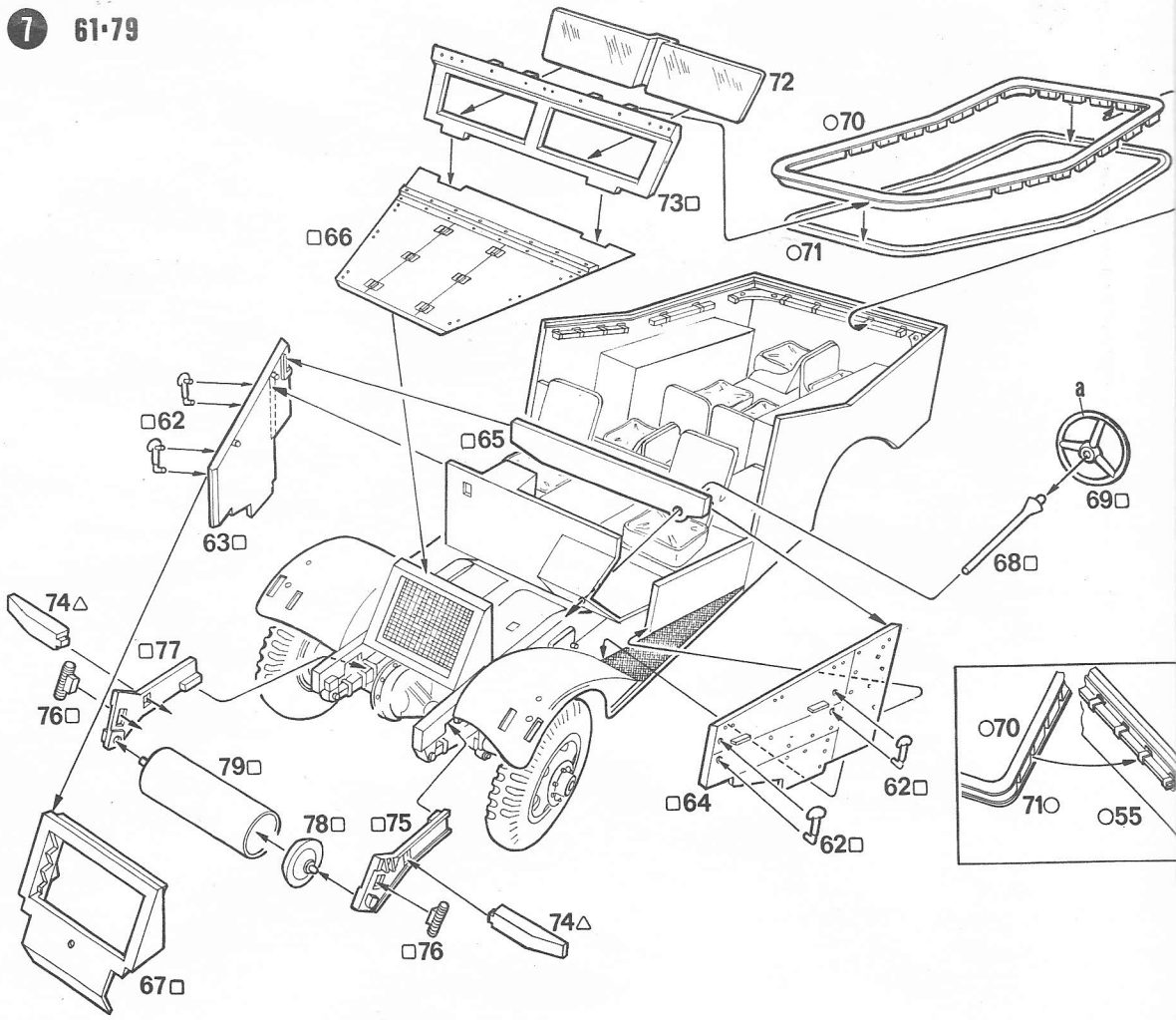


6

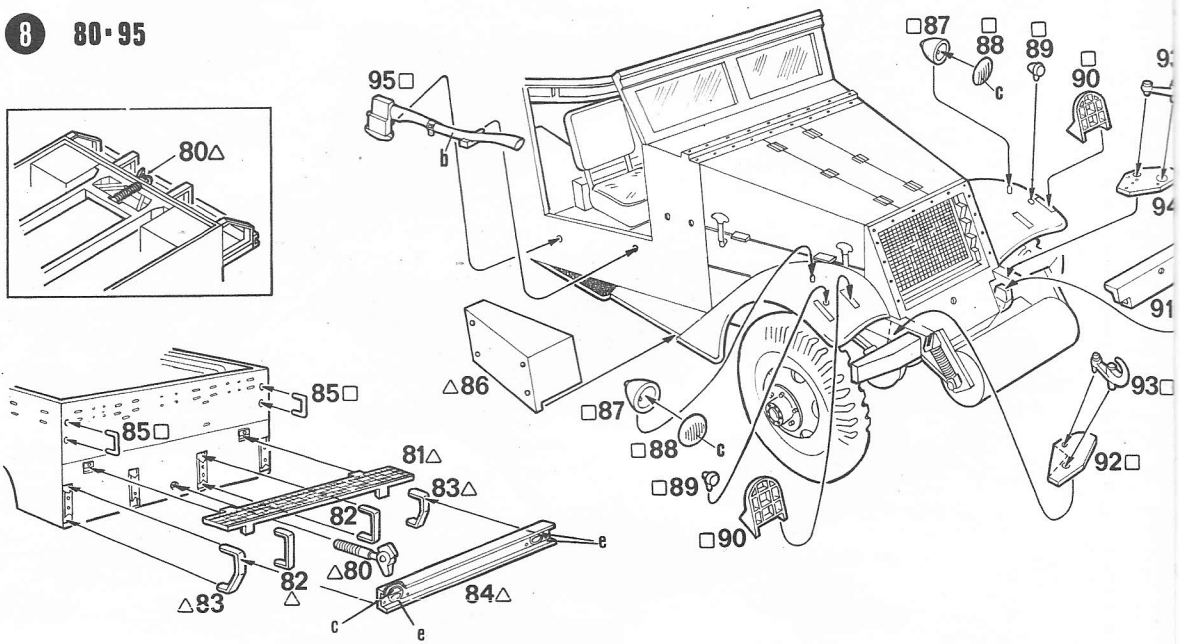
52-61

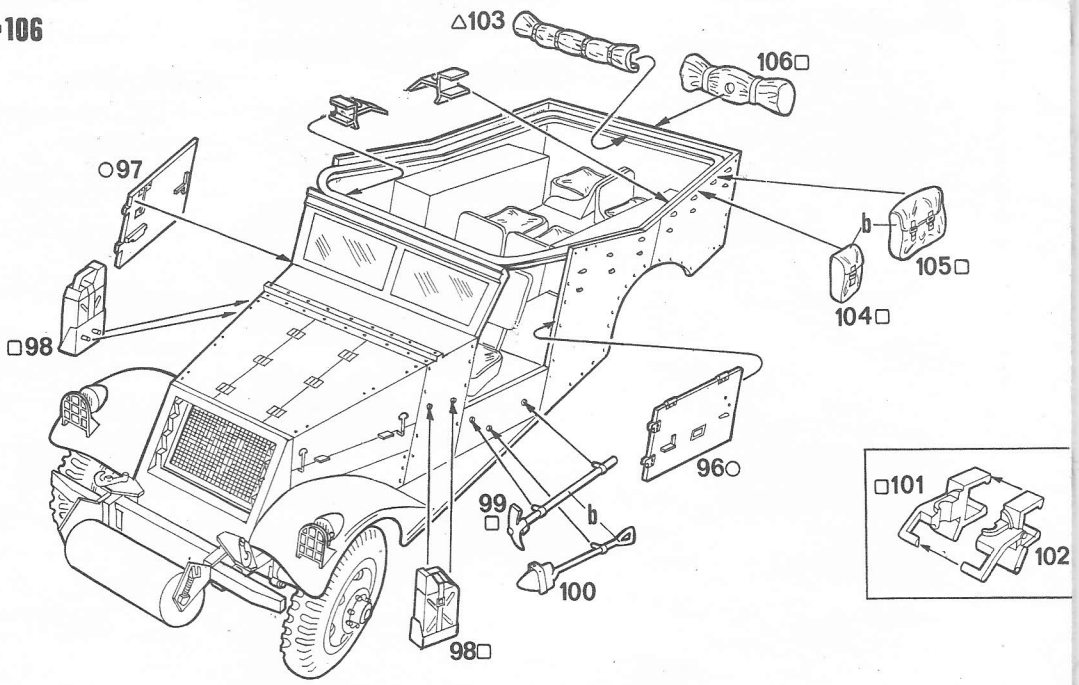


7 61-79

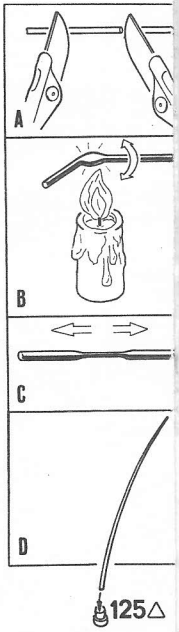
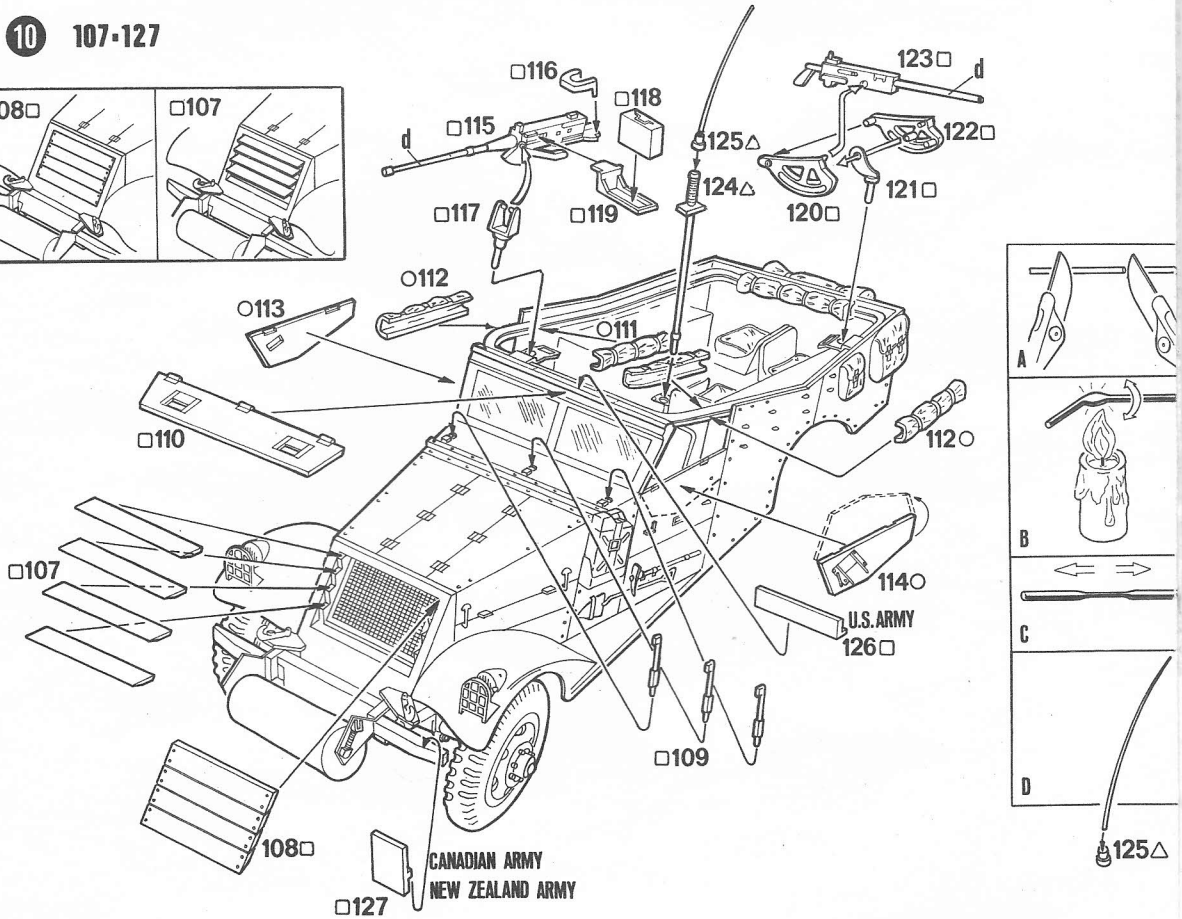
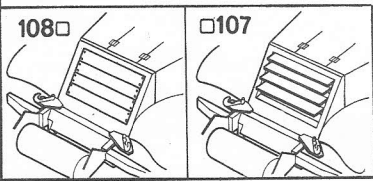


8 80-95

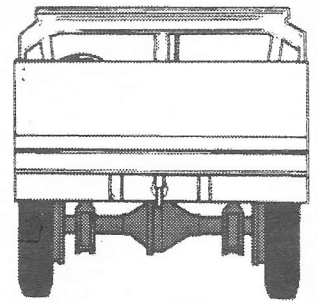
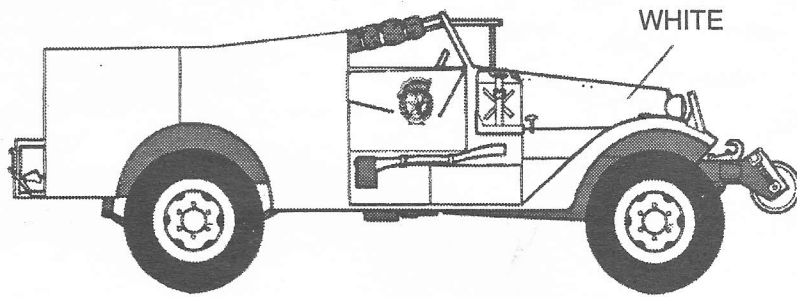




10 107-127

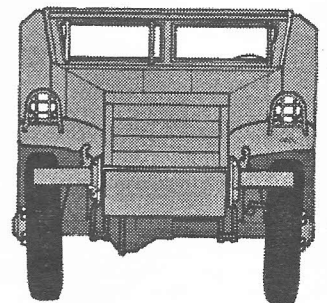
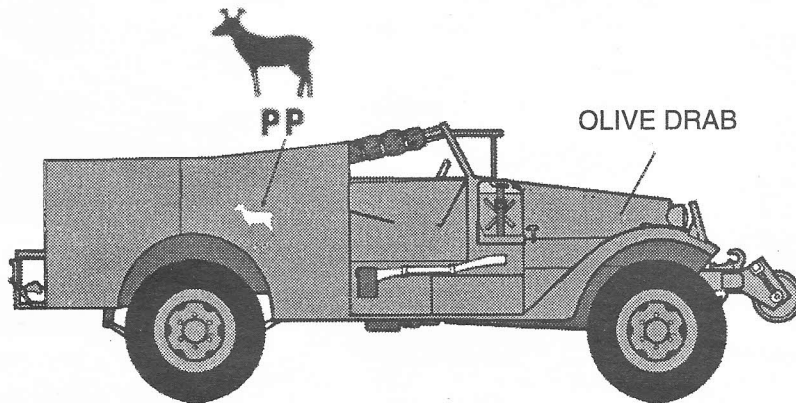
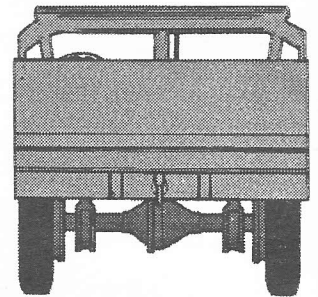
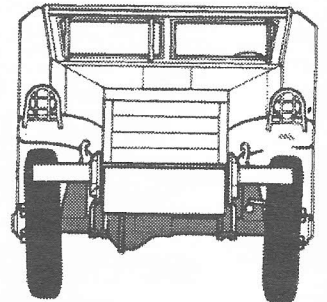


WINTER CAMOUFLAGE



Applying the decals:

1. Cut each image out of the backing sheet.
2. Soak in water for about 1/2 minute.
3. Place the decal in exact position and remove the backing sheet.
4. Remove excess water with the cotton swab.



SUMMER CAMOUFLAGE

Don't use parts □126 and □127 on Russian version