

United Air Lines DC-4



The DC-4 was originally called the DC-4E, a large, four-engined aircraft intended to fulfill requirements for a long-range passenger airliner. The DC-4E (E stands for experimental) was introduced as a 40-passenger airliner with an unusually wide cross-section for its day. It also sported a triple fin tail unit, similar to those found on the Constellation.

The DC-4E first flew on June 7, 1938 and was test flown numerous times. However it proved to be too complicated to maintain and uneconomical to operate. The sponsoring airlines requested a smaller and simpler derivative but before the definitive DC-4 could enter service, the outbreak of WWII forced production to be devoted to the US Army Air Force. This version was given the military designation C-54.

Only 74 civilian aircraft were built before production switched to the upgraded DC-6. All were unpressurized, as were the DC-4s built by Victory Aircraft, later Canadair, in Canada with Rolls-Royce Merlin engines. Canadair did build the pressurized DC-4M Argonaut for BOAC.

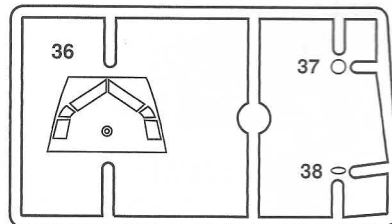
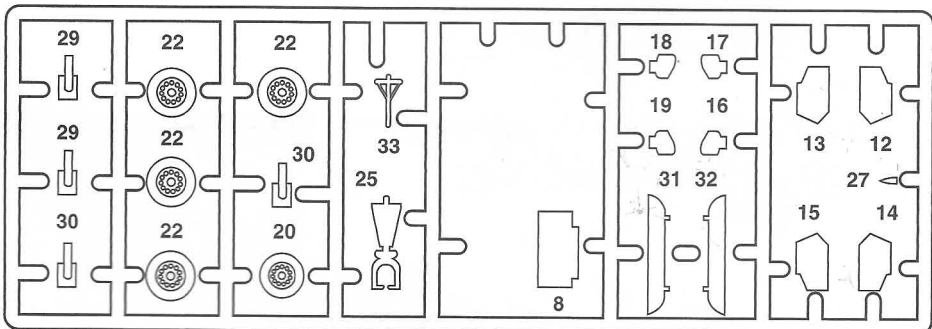
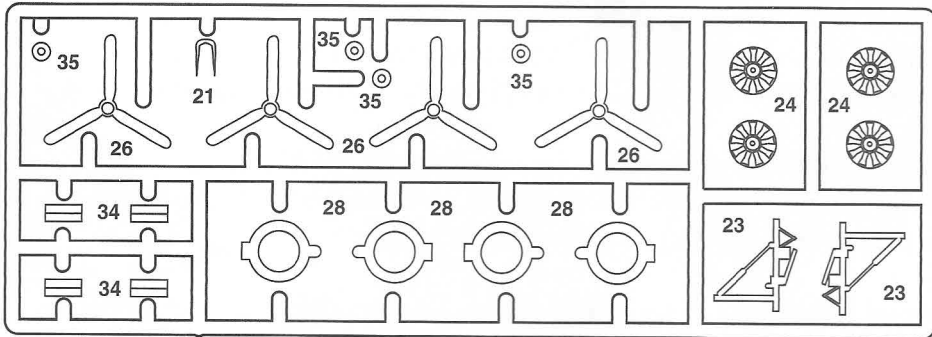
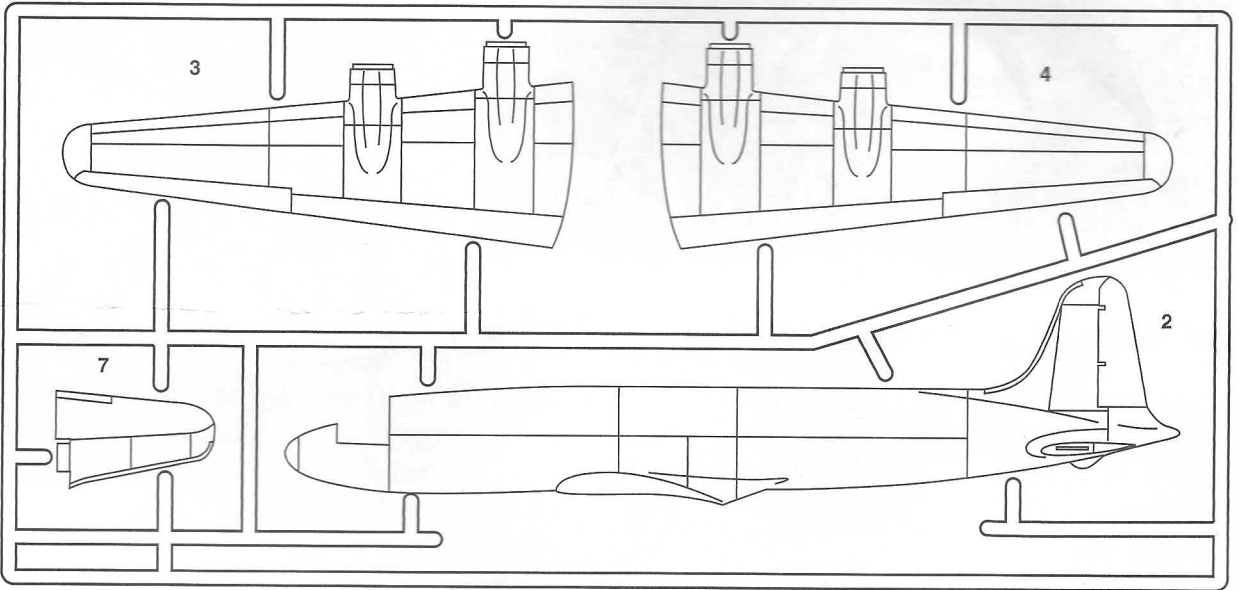
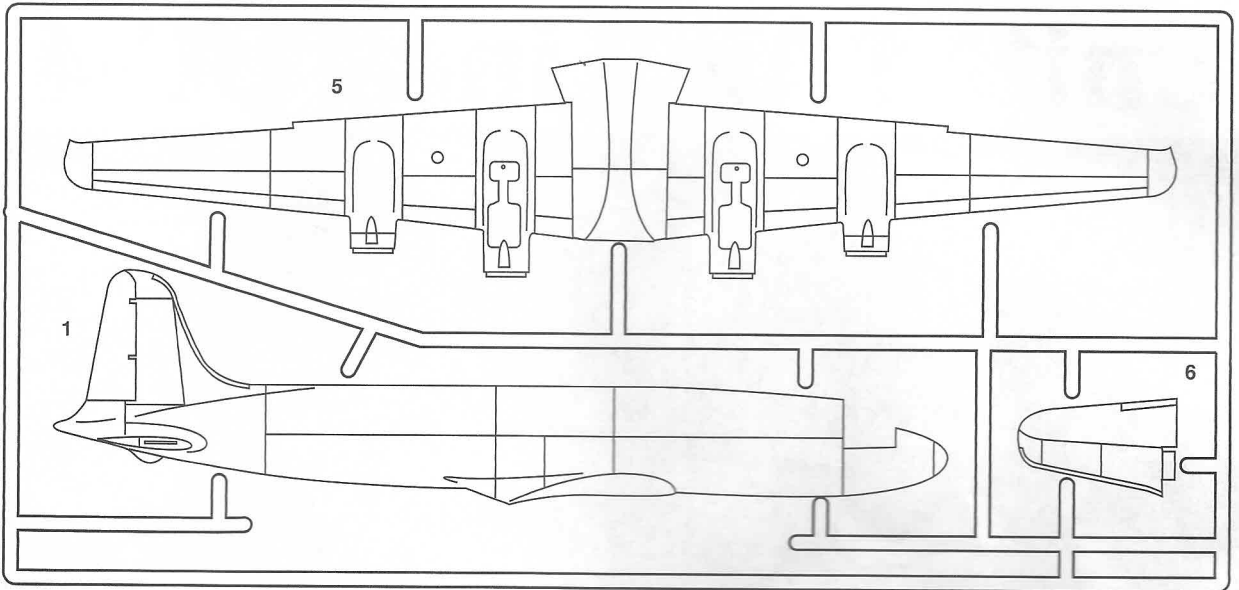
The DC-4 proved very popular and several remain in service today, particularly in the USA, where it serves as a charter/freight plane.

Minicraft Models, 1501 Commerce Drive, Elgin IL 60123 USA

www.minicraftmodels.com

Printed in China

PARTS LAYOUT DIAGRAM



Note: parts 6, 10 & 11 are not used in this kit



Cement
Coller
Kleben



DO NOT Cement
Ne pas Coller
Nicht Kleben



Cut away
Couper
Scheiden

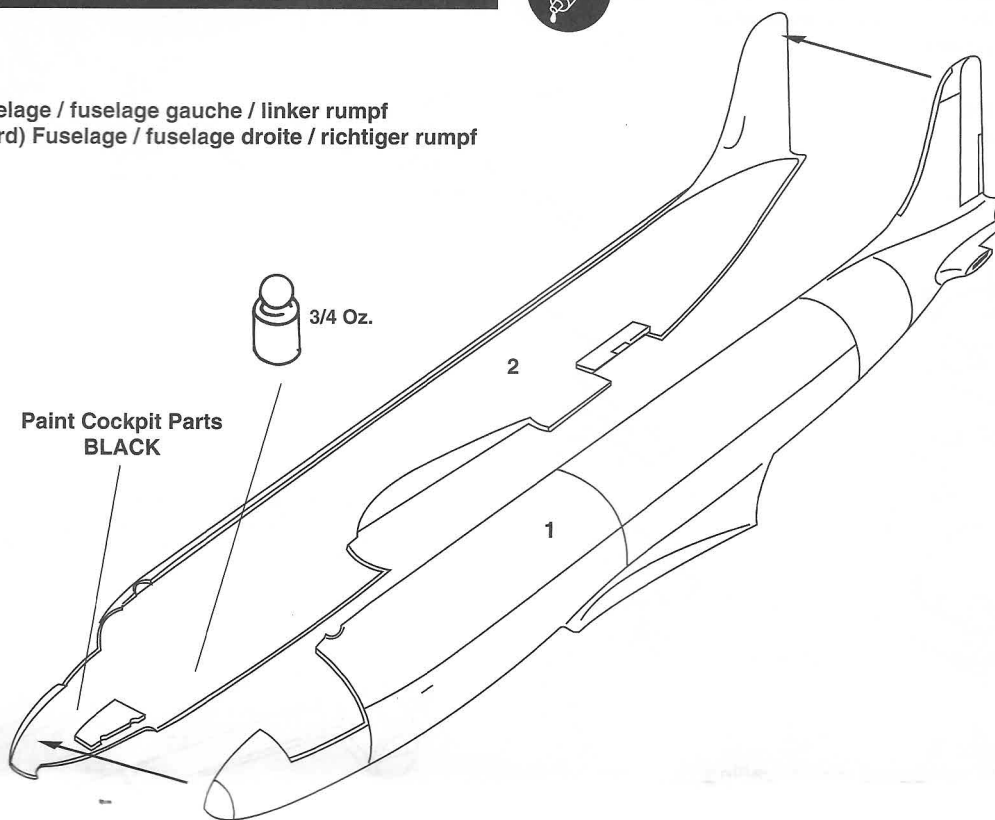


Optional parts
Choix
Auswahlmöglichkeit

1 FUSELAGE ASSEMBLY



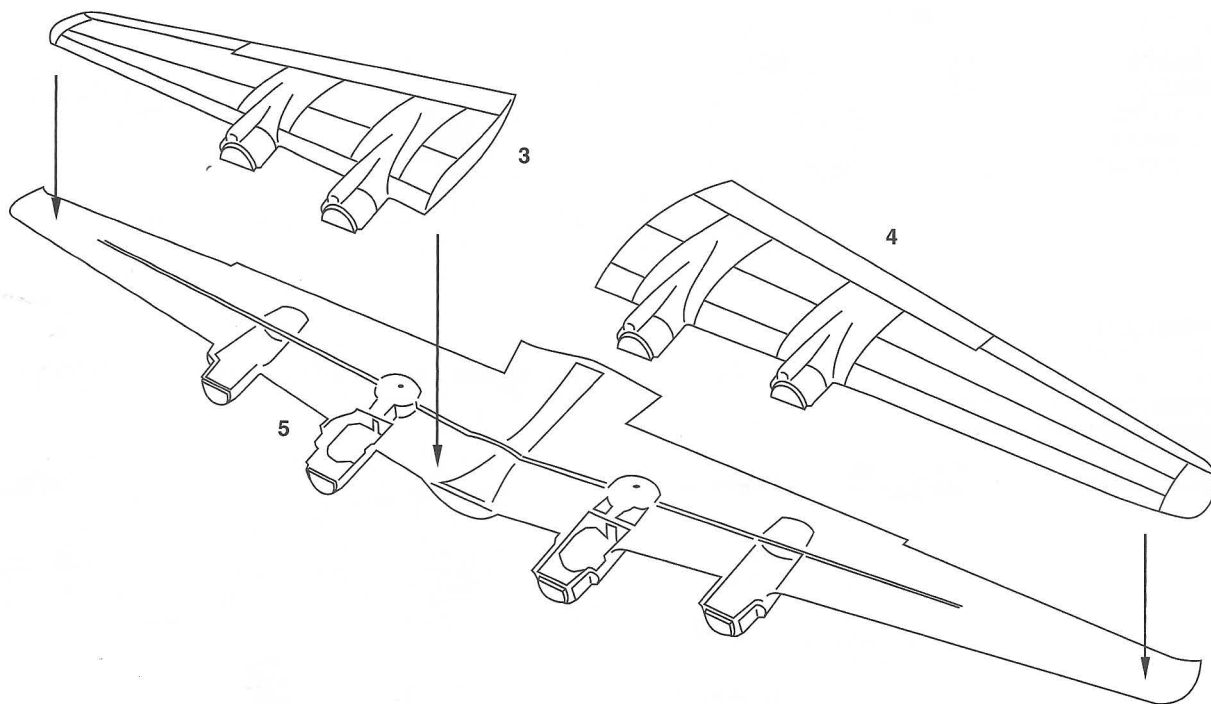
- 1 • Left (Port) Fuselage / fuselage gauche / linker rumpf
- 2 • Right (Starboard) Fuselage / fuselage droite / richtiger rumpf



2 WING ASSEMBLY



- 3 • Right upper wing / superieur aile droit / richtiger oberen flügel
- 4 • Lower wing / plus bas aile/ läßt Flügel
- 5 • Left upper wing / superieur aile gauche / linker oberen flügel



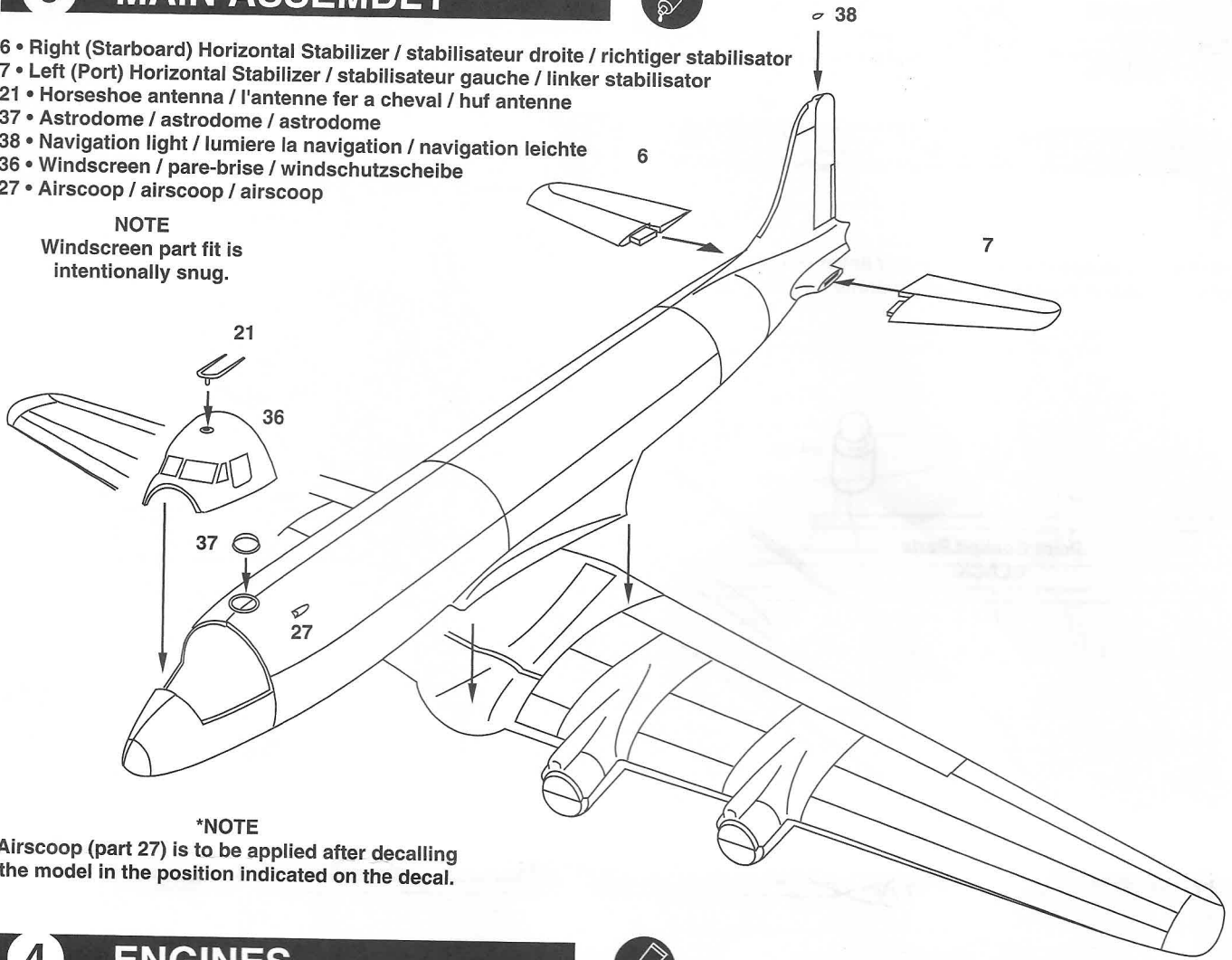
3 MAIN ASSEMBLY



- 6 • Right (Starboard) Horizontal Stabilizer / stabilisateur droite / richtiger stabilisator
- 7 • Left (Port) Horizontal Stabilizer / stabilisateur gauche / linker stabilisator
- 21 • Horseshoe antenna / l'antenne fer a cheval / huf antenne
- 37 • Astrodome / astrodome / astrodome
- 38 • Navigation light / lumiere la navigation / navigation leuchte
- 36 • Windscreen / pare-brise / windschutzscheibe
- 27 • Airscoop / airscoop / airscoop

NOTE

Windscreen part fit is intentionally snug.



***NOTE**

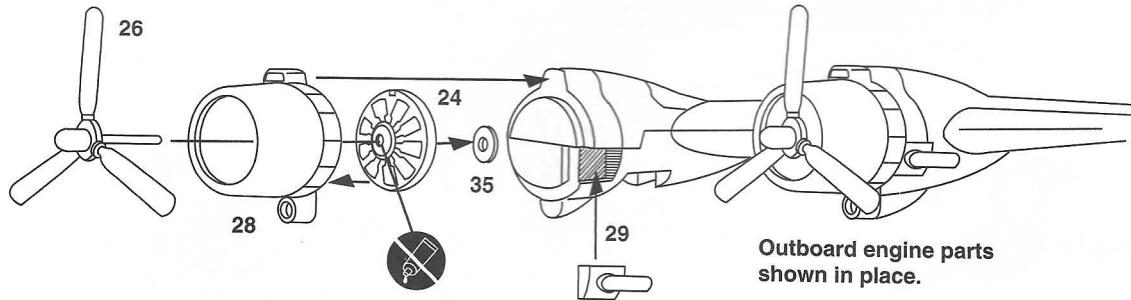
Airscoop (part 27) is to be applied after decalling the model in the position indicated on the decal.

4 ENGINES



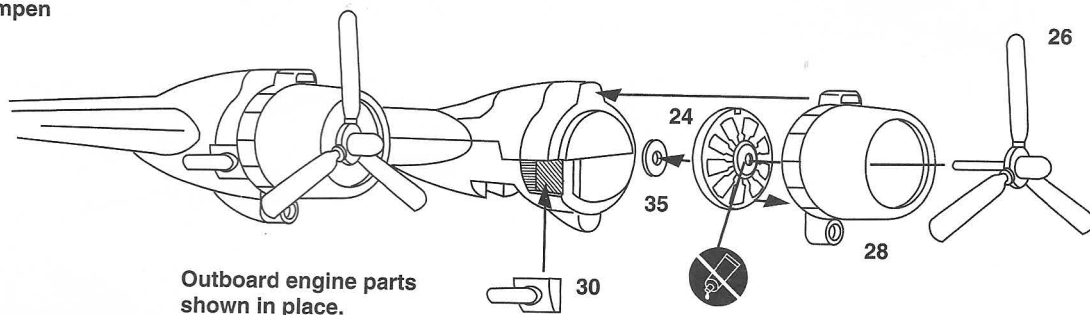
Left (port) engines / moteurs gauche / linker maschinen

- Propellers BLACK
- Hubs ALUMINUM
- Cowling interiors ALUMINUM
- Engines ALUMINUM
- Exhausts BURNT STEEL

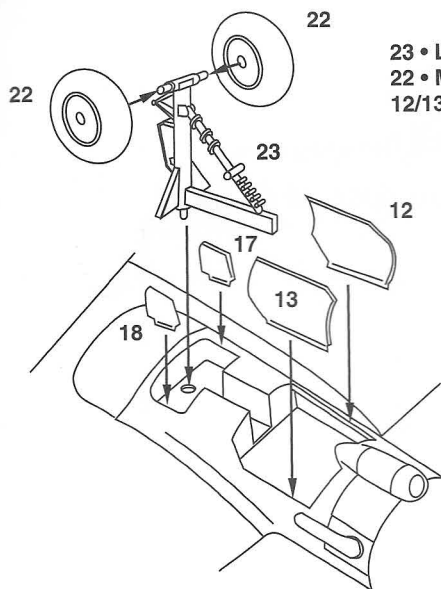


Right (starboard) engines / moteurs droite / richtiger maschinen

- 26 • Propeller / helice / propeller
- 28 • Cowling / cowling / cowling
- 24 • Engine / moteur /maschine
- 29 • Exhaust / echappement / auspumpen
- 30 • Exhaust / echappement / auspumpen
- 35 • Cap / couverture /kappe



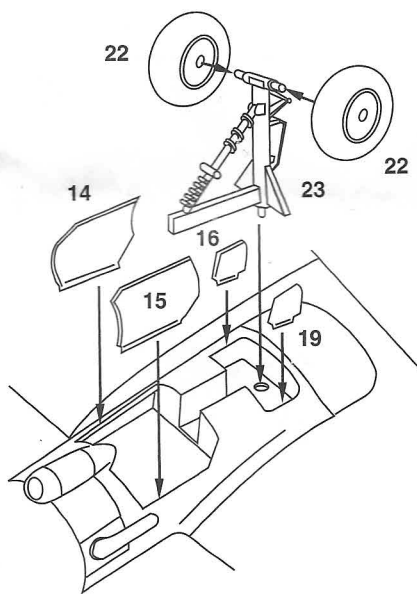
5 LEFT MAIN LANDING GEAR



- 23 • Left (Port) Main Gear Strut / train d'atterrissage principal / linker hauptlandung strut
 22 • Mainwheel / roue principale / hauptrad
 12/13/17/18 • Left (Port) Main Gear Doors / trappe de train / linker gang türen

- Tires BLACK
- Hubs ALUMINUM
- Struts WHITE
- Gear Door Interiors and Gear Wells WHITE

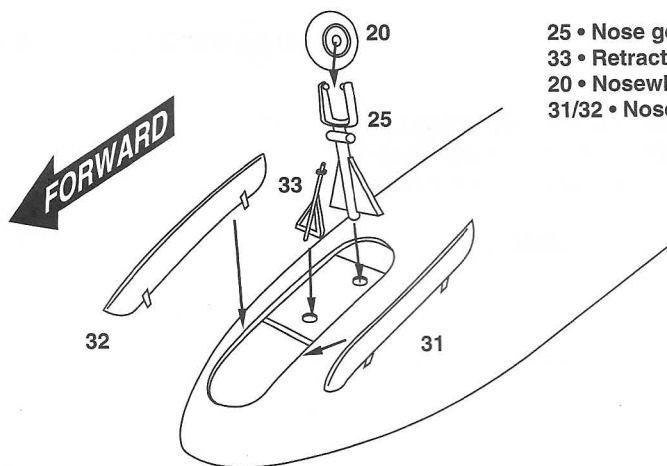
6 RIGHT MAIN LANDING GEAR



- 23 • Right (starboard) Main Gear Strut / train d'atterrissage principal / richtiger hauptlandung strut
 22 • Mainwheel / roue principale / hauptrad
 14/15/16/19 • Right (starboard) Main Gear Doors / trappe de train / richtiger gang türen

- Tires BLACK
- Hubs ALUMINUM
- Struts WHITE
- Gear Door Interiors and Gear Wells WHITE

7 NOSE LANDING GEAR

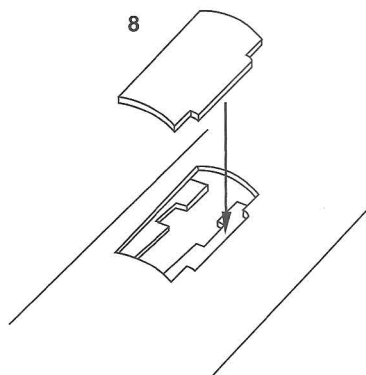
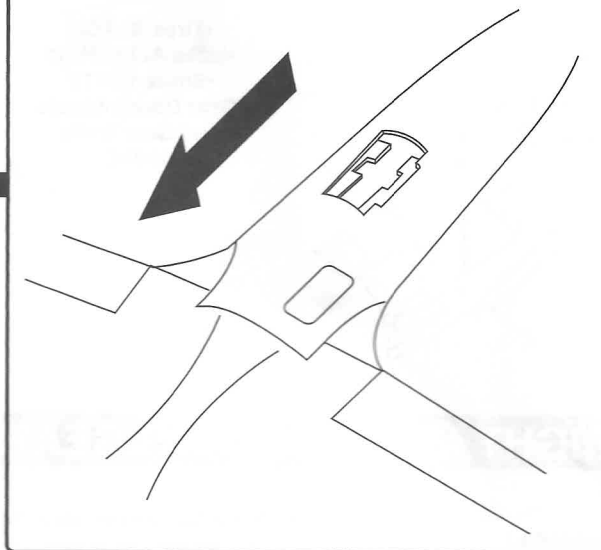


- 25 • Nose gear strut / bielette de nez / nase gang strut
 33 • Retraction strut / bielette de retraction / retraction strut
 20 • Nosewheel / roulette de nez / nase rad
 31/32 • Nose gear doors / trappe de train / nase gang türen

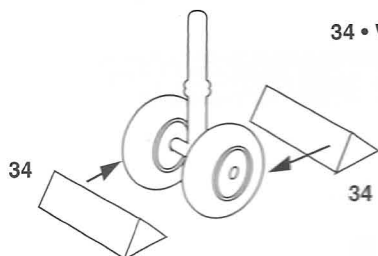
- Tires BLACK
- Hubs ALUMINUM
- Struts WHITE
- Gear Door Interiors and Gear Wells WHITE

8**UNDERSIDE FAIRING**

8 • Fairing (closed door) / faire (porte) / fairing (tür)

**NOTE • Underside of fuselage shown.
Arrow points toward nose of aircraft.****9****WHEEL CHOCKS**

34 • Wheel chocks / chocks de roue / rad bremsklötze

**DECAL INSTRUCTIONS**

Your MINICRAFT model includes high-quality waterslide decals. These decals adhere best to a glossy surface; and it is recommended that you apply a clear gloss coat over your painted model.

1 • Use a sharp scissors or knife to cut decals from carrier sheet. Do not cut into the clear film surrounding the individual decals. It is recommended to cut out and apply one decal at a time.

2 • Dip the decal in warm water for approximately ten seconds, then lay face up on a paper towel. After 20-30 seconds, the decal will slide freely from the backing paper. Use a small brush to slide the decal from the backing paper and into position on the model. Carefully blot excess water from the decal, using care not to move the decal.

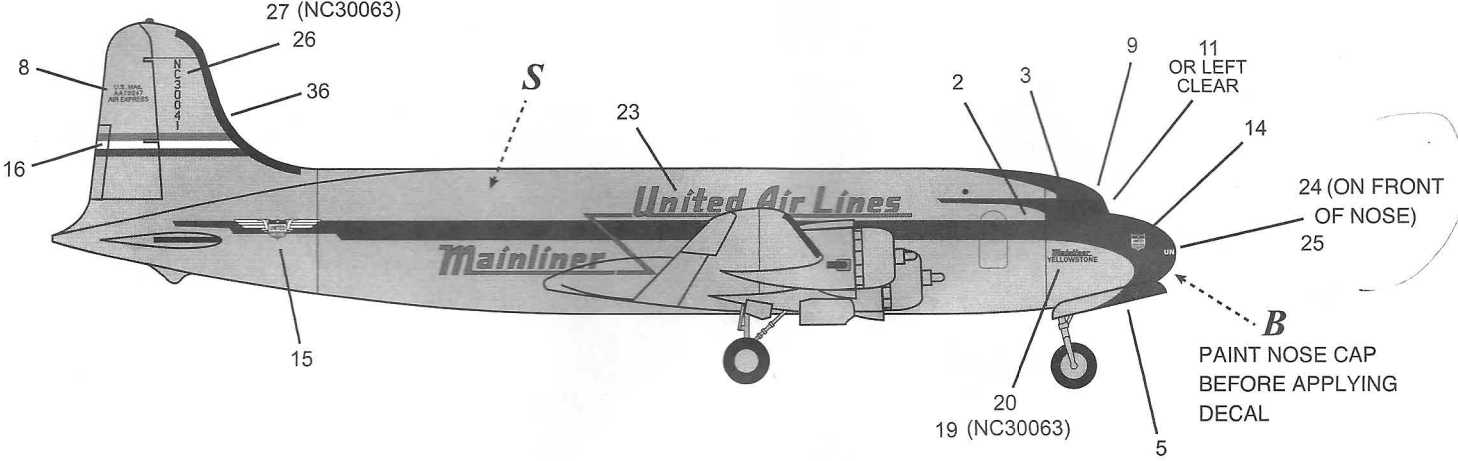
3 • If you choose to use a setting solution, apply a thin coat over the decal.

4 • Allow the decals to dry overnight.

5 • Wash any adhesive residue off the model with a small amount of clean water and dry model thoroughly.

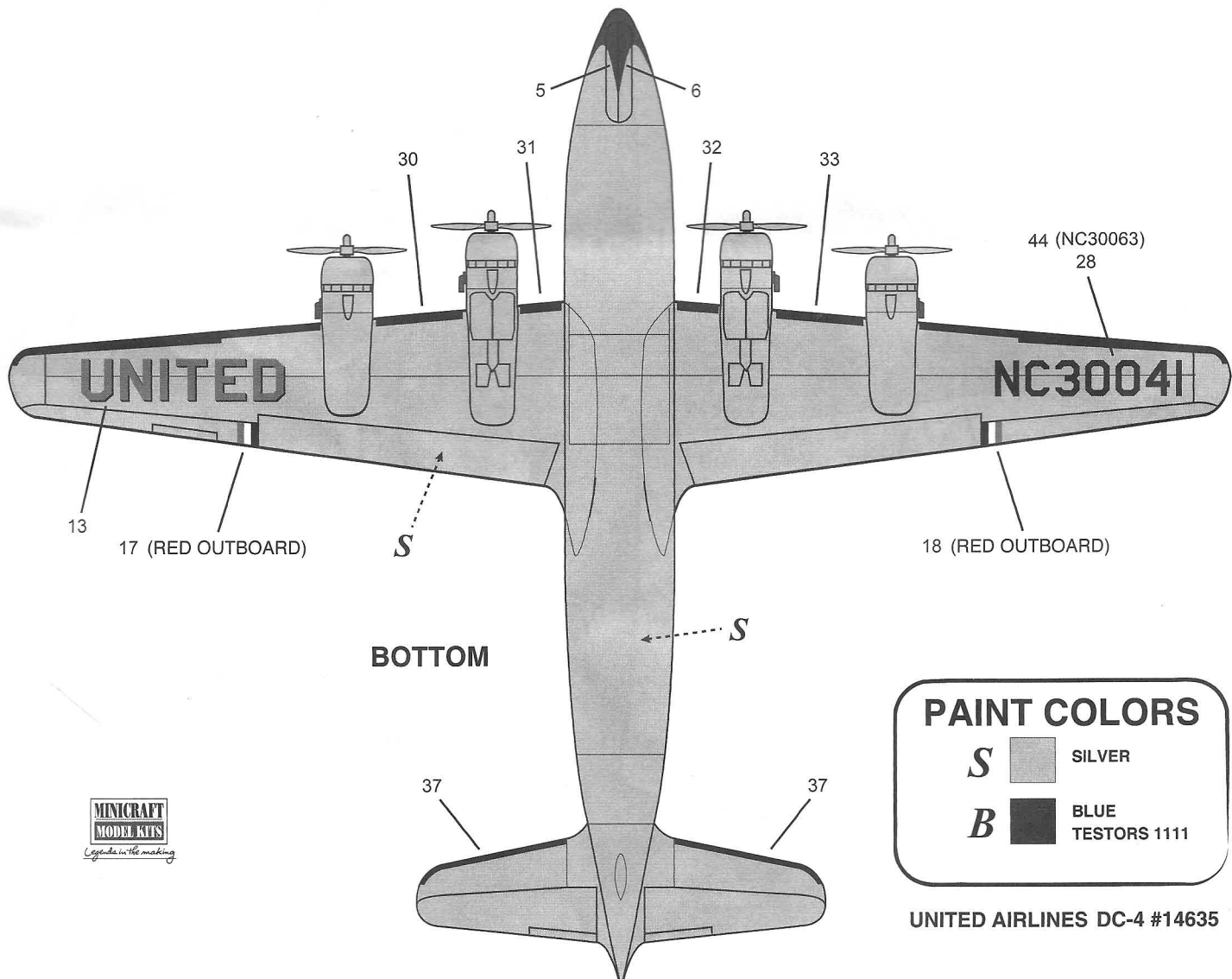
6 • Apply clear gloss, matte or flat coat to model to seal decals.

27 (NC30063)



24 (ON FRONT OF NOSE)
25

B
PAINT NOSE CAP
BEFORE APPLYING
DECAL



BOTTOM

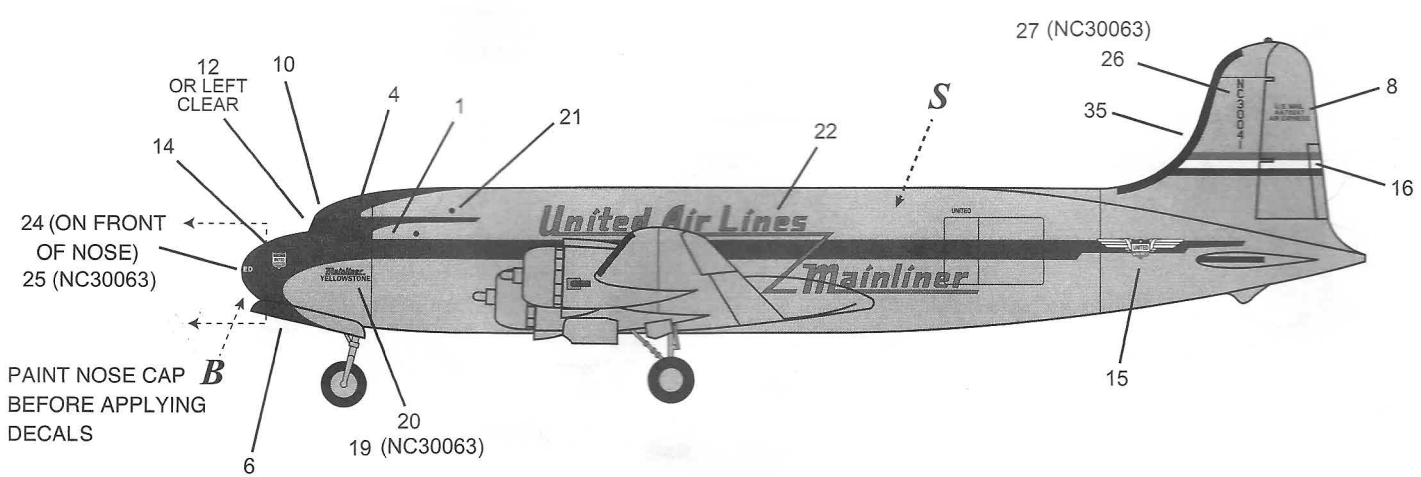
PAINT COLORS

S  SILVER

B  BLUE
TESTORS 1111



UNITED AIRLINES DC-4 #14635



NC30041 - Mainliner Yellowstone
NC30063 - Mainliner Atlanta

